

Elcometer 212 Digital Pocket Thermometer with Surface Probe



Elcometer 212 Digital Pocket Thermometer with Surface Probe

At a glance:

Rapid temperature measurement in under four seconds.

Water resistant case with integrated rubber seals

Foldaway probe for safe storage

°C / °F user switchable

The Elcometer 212 is a digital, pocket sized thermometer ideal for day to day use.

Incorporating a fast response, stainless steel surface probe, the Elcometer 212 provides temperature readings in under four seconds.

Housed in a water resistant case with integrated rubber seals and a moulded flush window, preventing dirt and leaks damaging the LCD display, the Elcometer 212 is ideal for use in the harshest of environments.

The probe conveniently folds back into the side of the instrument, preventing damage when not in use.

- Units: User switchable between °C and °F
- Resolution: Can be set to 0.1°C/°F or 1°C/ °F depending on the user's specific requirements.
- Auto-Off: The instrument will switch off automatically after 10 minutes of inactivity. This function can be disabled by the user if not required.

Climatic Testing

The monitoring of climatic conditions such as temperature, relative humidity, dewpoint and moisture in industry is often vital to the success of the application of a coating. These parameters determine both the conditions for the application of the coating and the resulting quality and performance of the coated product.

TECHNICAL SPECIFICATION	
Measuring Range	-49.9°C to +299.9°C (or -58°F to +572°F - user selectable)
Operating Temperature	-20 to 50°C (-4 to 58°F)
Resolution	0.1°C/°F (or 1°C/1°F - user selectable)
Accuracy	±0.4°C (-49.9 to ±199.9°C) ±1°C (+200 to 299.9°C)
Probe	Fast Response, Stainless Steel
Battery	2 x 3 volt CR2032 lithium coin cell
Battery Life	1500 hours
Display	14mm LCD
Case Dimensions	19mm x 47mm x 153mm (0.7" x 1.9" x 0.7")
Weight	97g (3.4oz)
Part Number	G212----2A Elcometer 212 Digital Pocket Thermometer with Surface Probe
Packing List	Elcometer 212 Digital Pocket Thermometer with batteries fitted and operating instructions

Related Products



Elcometer 212

Elcometer 212 Digital Pocket Thermometer with Needle Probe

Designed to cope with routine day to day use, the Elcometer 212 is the gauge to take fast, accurate measurements. Incorporating an auto-power on/off facility, by simply unfolding and folding the probe, the instrument switches on and off.



Elcometer 213/2

Elcometer 213/2 Digital Waterproof Thermometer

The Elcometer 213/2 Digital waterproof thermometer offers the latest microprocessor technology, superior durability and is designed for reliability and ease of use.



Elcometer 214L

Elcometer 214L Infrared Digital Thermometer

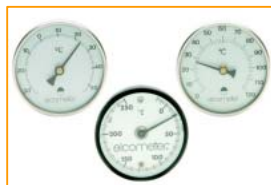
This Infrared Laser Thermometer has a wide temperature range of -32°C to 420°C (-25.6°F to 788°F) and an optical resolution of 20:1 allowing accurate, non-contact surface temperature measurements to be taken.



Elcometer 214

Elcometer 214 Infrared Digital Thermometer

The Elcometer 214 Infrared Digital Thermometer is a hand held, battery operated instrument. It safely and accurately measures surface temperature of non reflective materials using infrared technology which allows fast, non-contact temperature measurement, thereby avoiding surface contamination.



Elcometer 113

Elcometer 113 Magnetic Thermometers

The Elcometer 113 Magnetic Thermometer continuously indicates the surface temperature of steel and other magnetic material. The thermometers are based on a bimetallic strip and therefore do not require batteries but do require time to adjust to the temperature.

ENGLAND

Elcometer Limited
Edge Lane
Manchester M43 6BU

Tel: +44 (0)161 371 6000
Fax: +44 (0)161 371 6010
e-mail: sales@elcometer.com
www.elcometer.com

USA

Elcometer Inc
1893 Rochester Industrial Drive
Rochester Hills Michigan 48309

Tel: +1 248 650 0500
Toll Free: 800 521 0635
Fax: +1 248 650 0501
e-mail: inc@elcometer.com
www.elcometer.com

ASIA & THE FAR EAST

Elcometer (Asia) Pte Ltd
896 Dunearn Rd
Sime Darby Centre #3-09
Singapore 589472,
Republic of Singapore

Tel: +65 6462 2822
Fax: +65 6462 2860
e-mail: asia@elcometer.com
www.elcometer.com

BELGIUM

Elcometer SA
Rue Vallée 13
B-4681 Hermalle /s Argenteau

Tel: +32 (0)4 379 96 10
Fax: +32 (0)4 374 06 03
e-mail: be_info@elcometer.be
www.elcometer.be

NETHERLANDS

Elcometer NL
Newtonlaan 115
3584 BH Utrecht

Tel: +31 (0)30 210 7005
Fax: +31 (0)30 210 6666
e-mail: nl_info@elcometer.com
www.elcometer.com

FRANCE

Elcometer Sarl
97 Route de Chécý
45430 BOU

Tel: +33 (0)2 38 86 33 44
Fax: +33 (0)2 38 91 37 66
e-mail: fr_info@elcometer.fr
www.elcometer.fr

GERMANY

Elcometer Instruments GmbH
Ulmer Strasse 68
D-73431 Aalen

Tel: +49 (0)7361 52806 0
Fax: +49 (0)7361 52806 77
e-mail: de_info@elcometer.de
www.elcometer.de